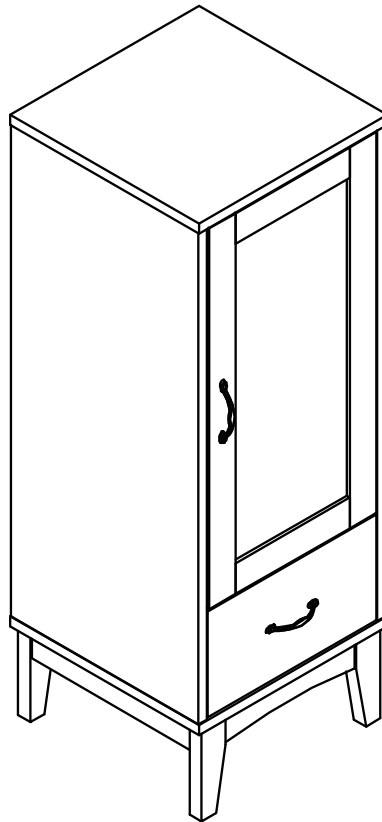


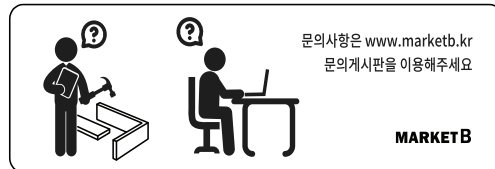
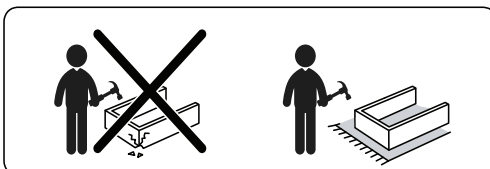
# PEMBA

## 선반 수납장 6050H 조립설명서 2019



### [ 취급주의 ]

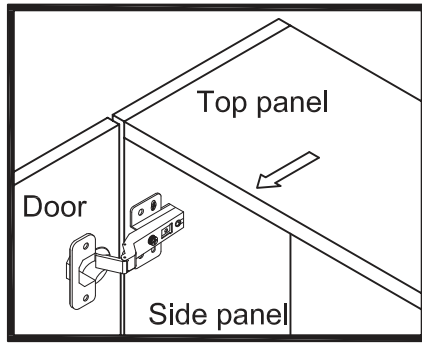
- 가구사용시 임의적으로 휘발성있는 물질을 흘렸을 경우 가구표면의 손상이 발생하오니 주의하세요
- 무리한 힘이나 충격을 가하지 마시고 수평을 유지하여 사용하세요.
- 직사광선이나 강한열 혹은 혹한을 피하여 주세요.
- 이동시 끌지마시고 들어서 이동하여 주세요.
- 테이프나 접착용품은 제품에 훼손을 일으킬수 있으니 주의하세요.
- 교환/취소/반품/환불 관련사항은 사이트 참조바랍니다.



# TO ADJUST YOUR DOORS TO MAKE THE GAPS MORE EVEN (OPTIONAL).

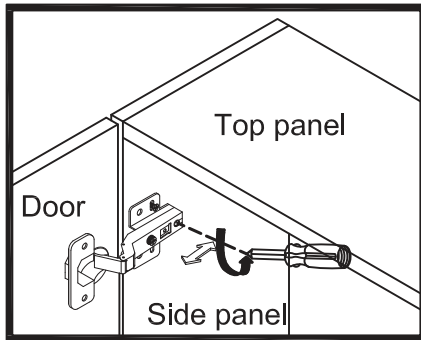
## STEP 1

Open the door.



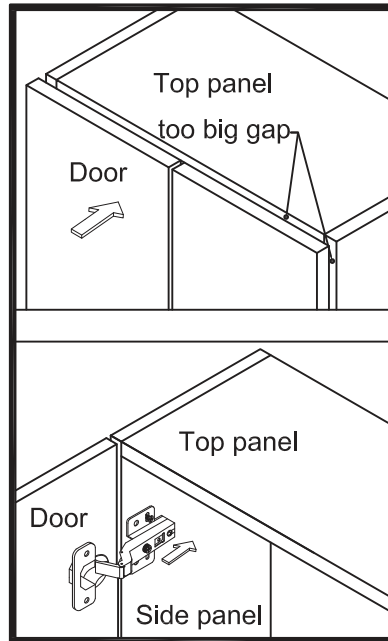
## STEP 2

Adjust the gap between door panel and side panel



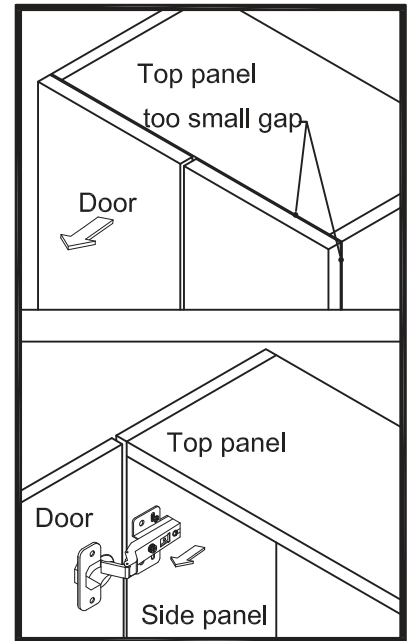
Loosen the screw indicated a little, adjust the hinge to right position (see step 2a & 2b), then tighten the screw.

### STEP 2a MOVE DOOR IN



Push the hinge back a little.

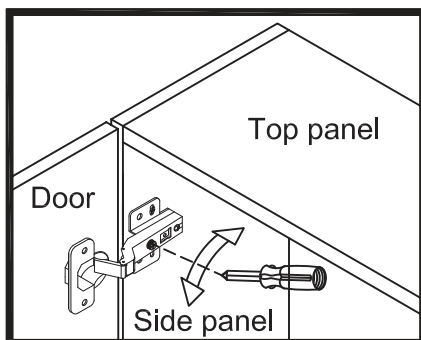
### STEP 2b MOVE DOOR OUT



Pull the hinge forward a little.

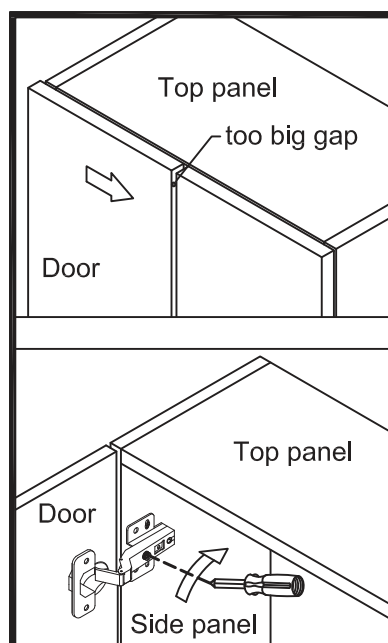
## STEP 3

To adjust the gap between two door



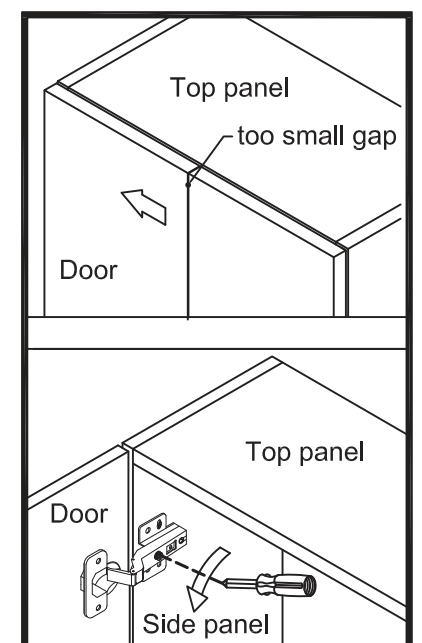
Loosen or tighten the screw indicated a little to adjust the gap between doors panels (see step 3a & step 3b)

### STEP 3a MOVE DOOR RIGHT



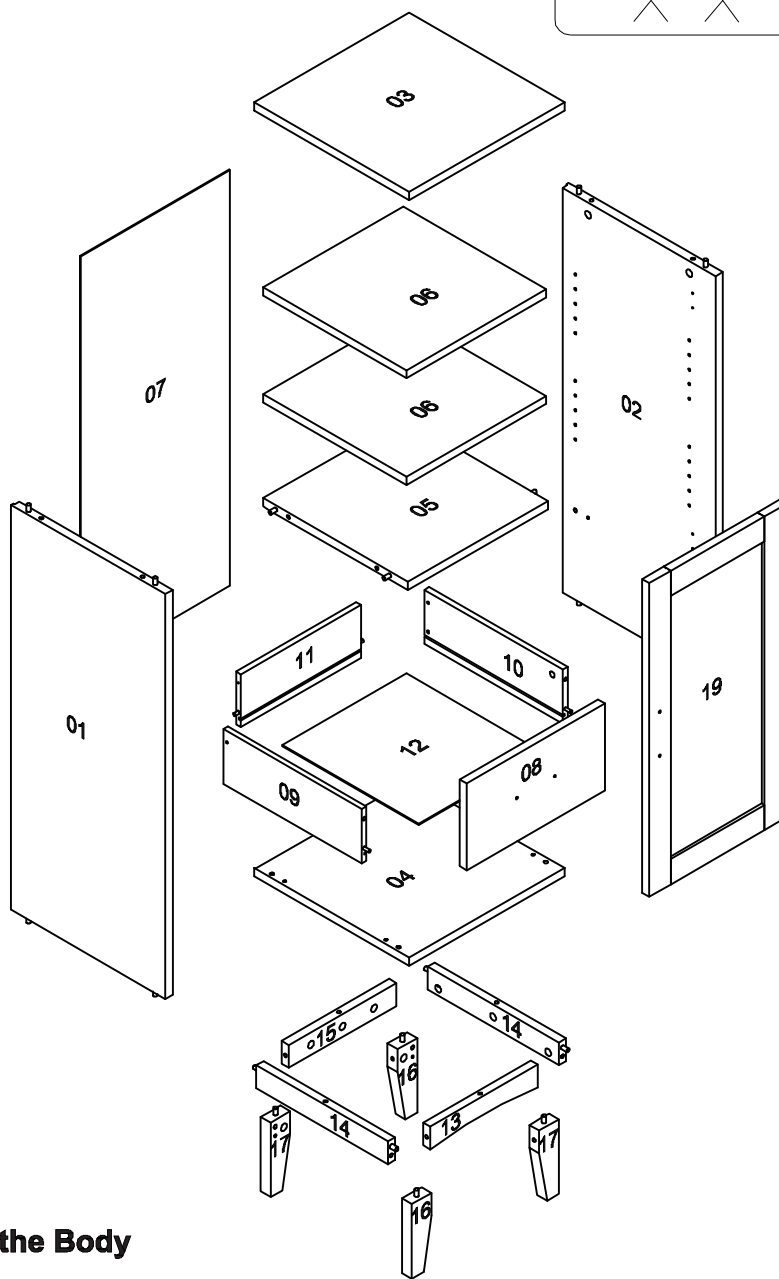
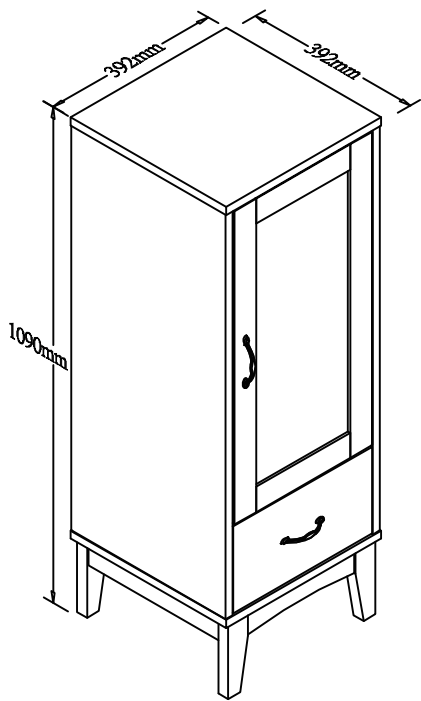
Turn the screw clockwise a little as shown to make the gap small.

### STEP 3b MOVE DOOR LEFT

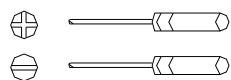


Turn the screw counterclockwise a little as shown to make the gap big.

# HERE'S HOW



**(Tools not provided)**  
**Flat Blade Screwdriver**  
**Phillips Head Screwdriver**  
**Wooden Hammer**



## To Assemble the Body

**Wooden Hammer**

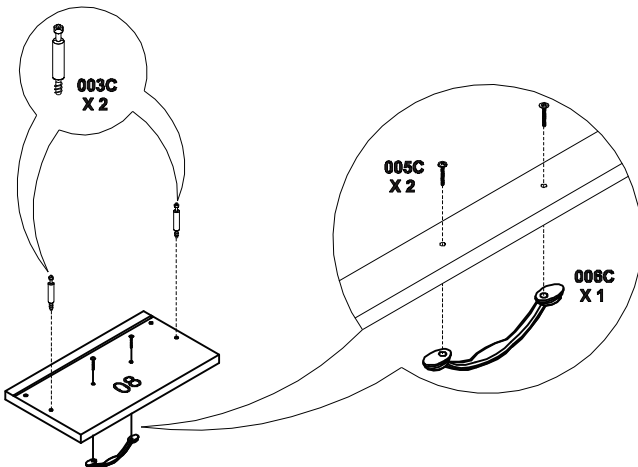
## CHECK YOUR COMPONENTS

<b>001C</b>	<b>002C</b>	<b>003C</b>	<b>004C</b>	<b>005C</b>	<b>006C</b>	<b>007C</b>	<b>008C</b>	<b>009C</b>	<b>010C</b>	
X 24	X 2	X 18	X 4 5.5X45mm	X 4	X 2	X 1	X 6 3.5x12mm	X 6 5.6x11mm	X 1	
<b>011C</b>	<b>012C</b>	<b>013C</b>	<b>014C</b>	<b>015C</b>	<b>016C</b>	<b>017C</b>	<b>018C</b>	<b>019C</b>	<b>020C</b>	<b>021C</b>
X 2 4x32mm	X 1	X 22	X 1	X 2 3.5x15mm	X 4	X 8 4x15mm	X 2	X 8	X 8	X 4

# STEP 1

Will require these parts:

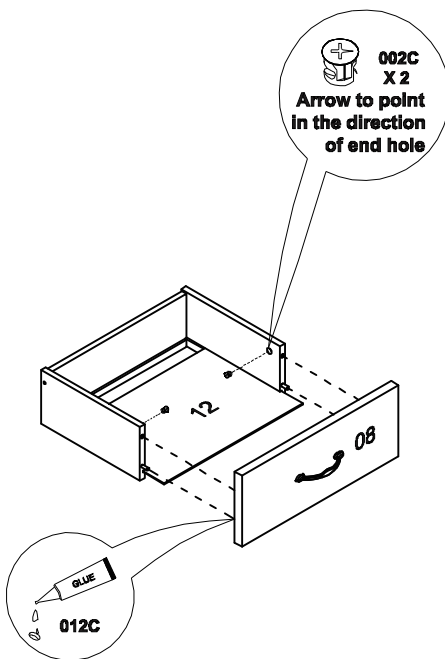
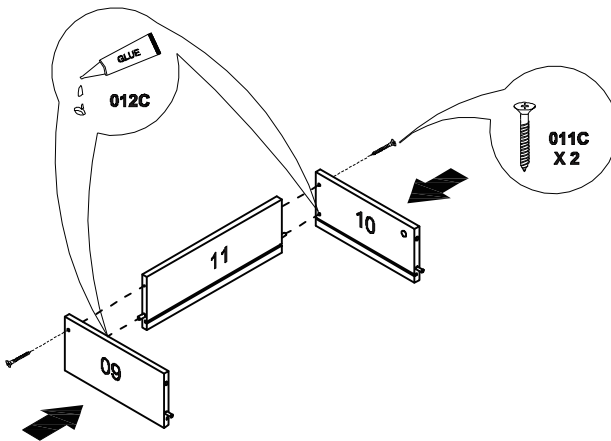
- 003C X 2
- 005C X 2
- 006C X 1



# STEP 2

Will require these parts:

- 002C X 2
- 011C X 2
- 012C

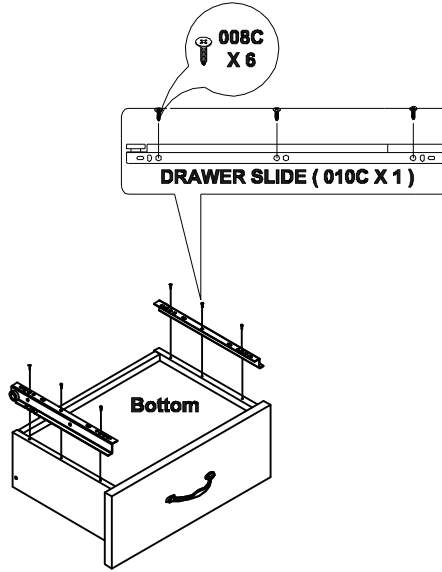


### STEP 3

Will require these parts:

008C  
X 6

010C  
X 1



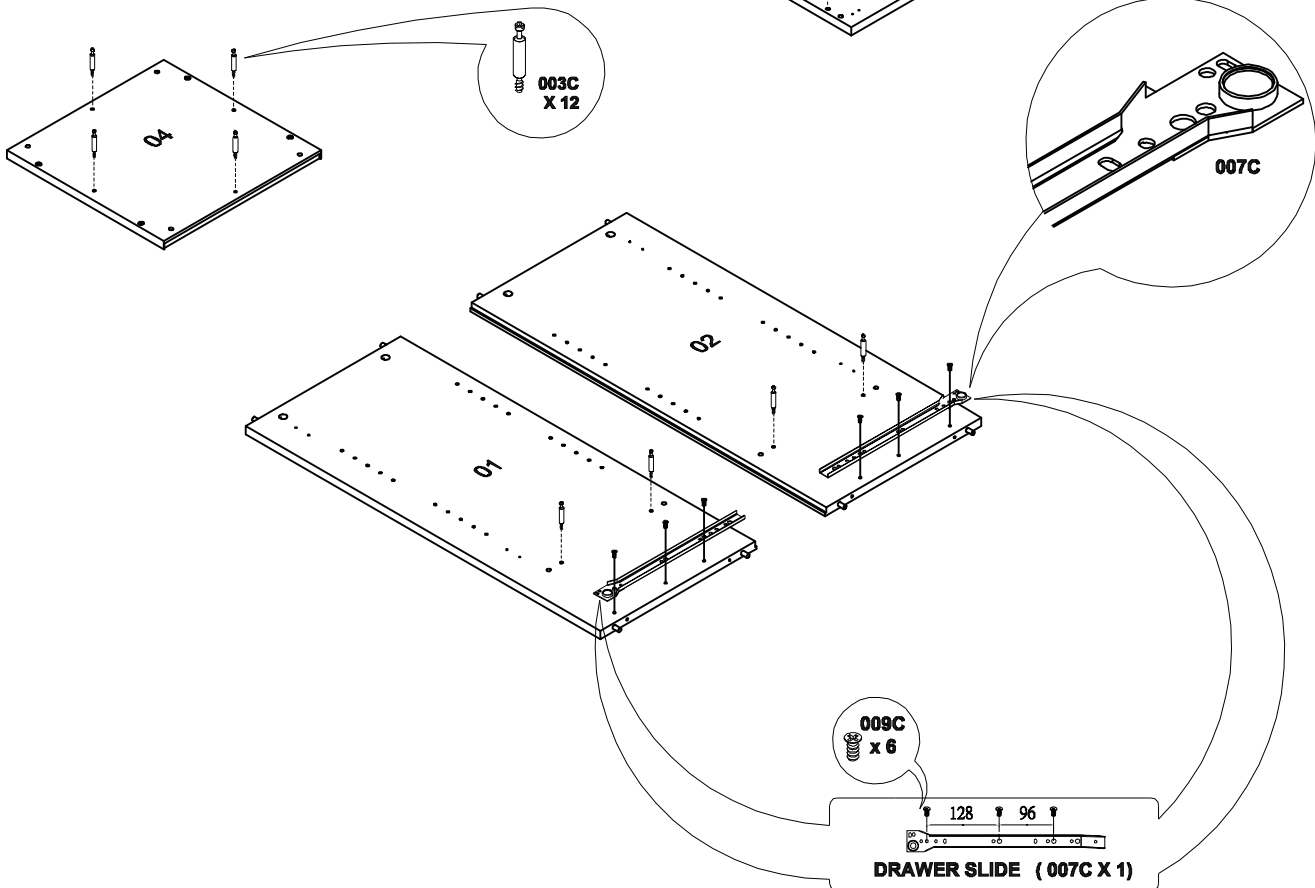
### STEP 4

Will require these parts:

003C  
X 12

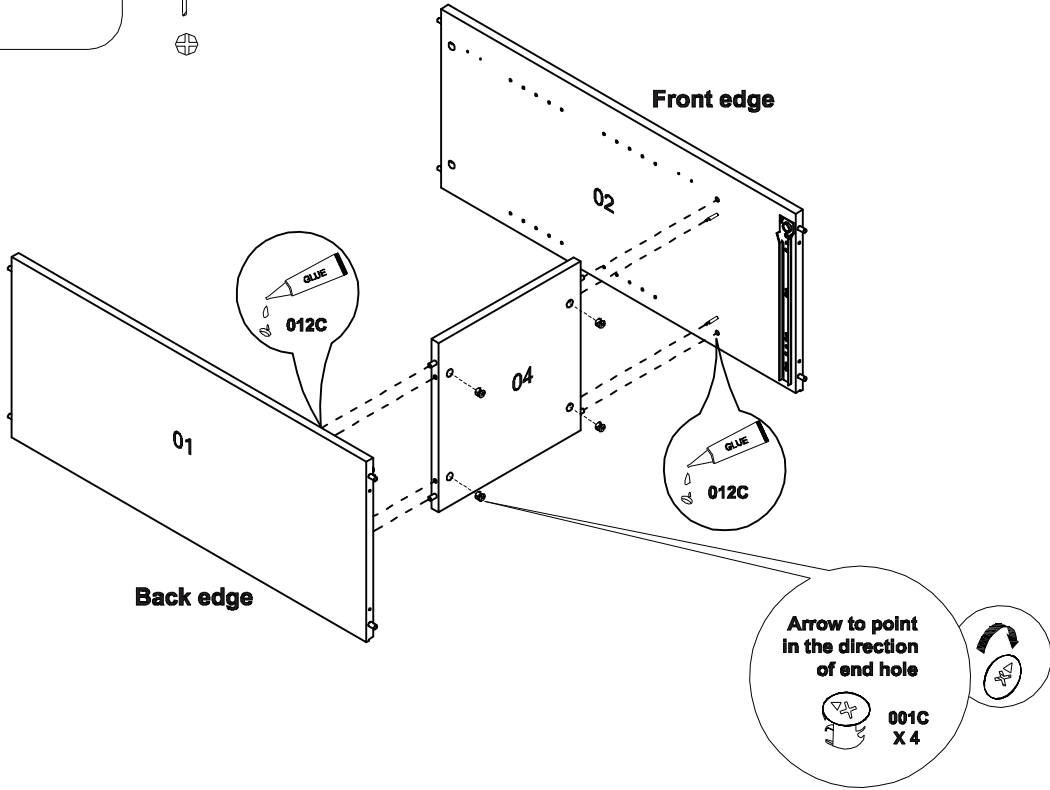
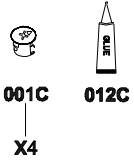
007C  
X 1

009C  
X 6



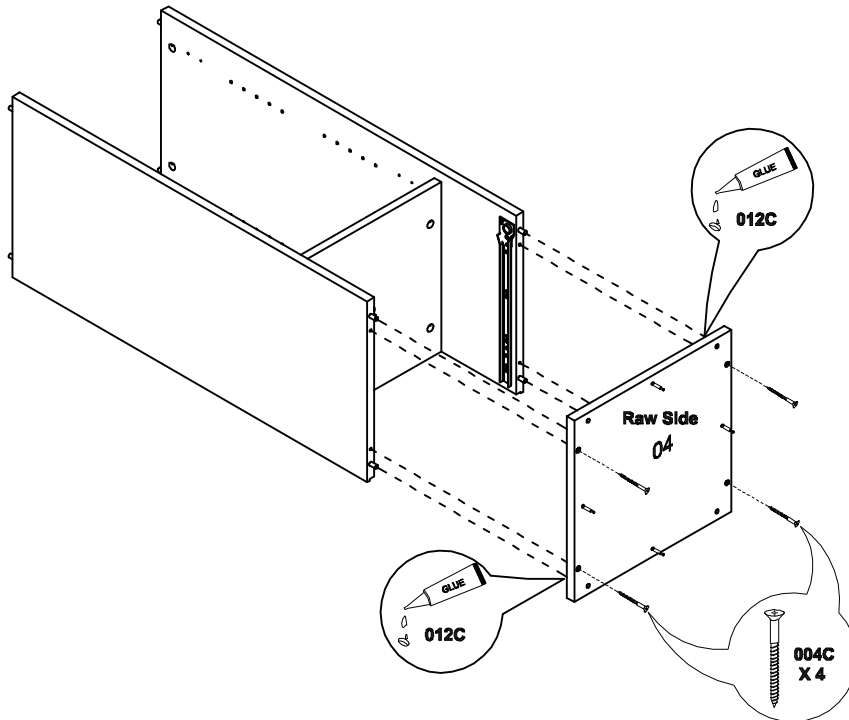
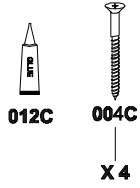
# STEP 5

Will require these parts:







# STEP 6

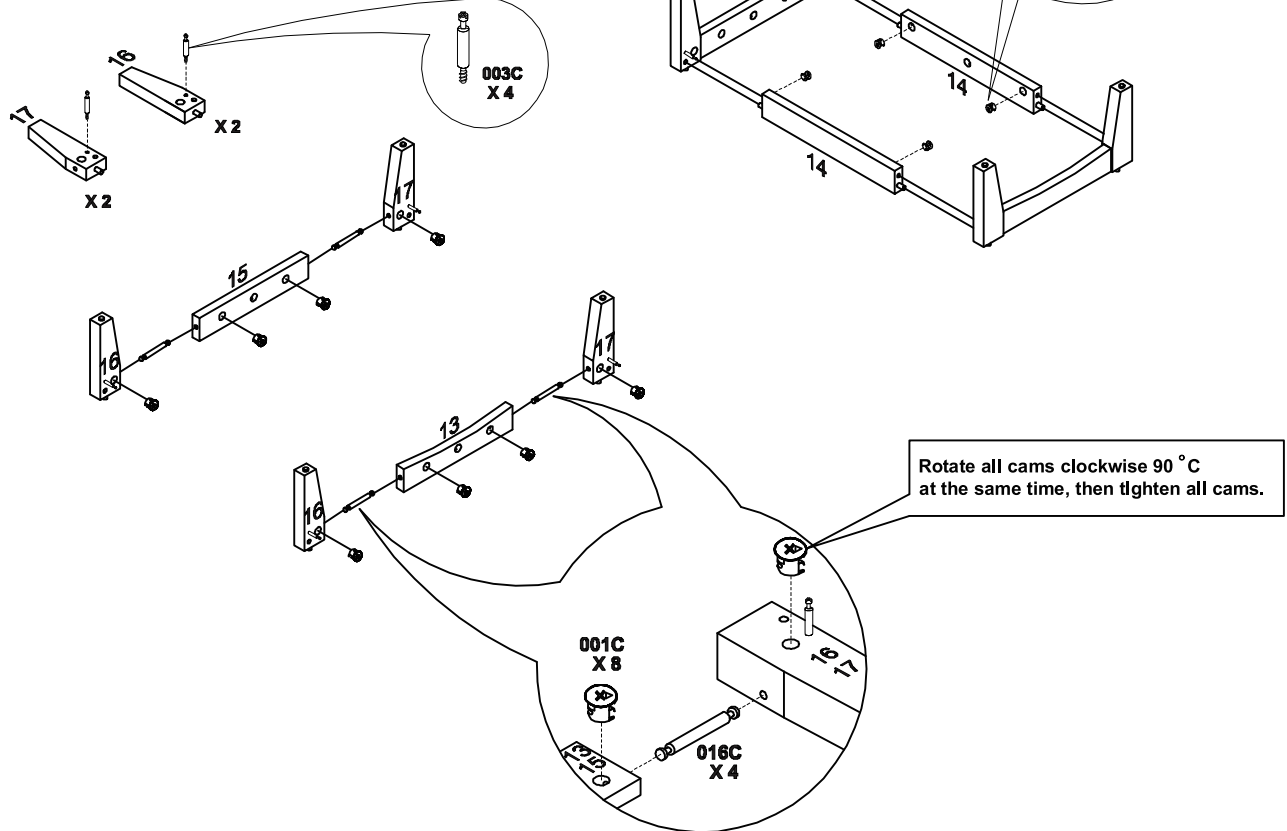
Will require these parts:



# STEP 7



Will require these parts:

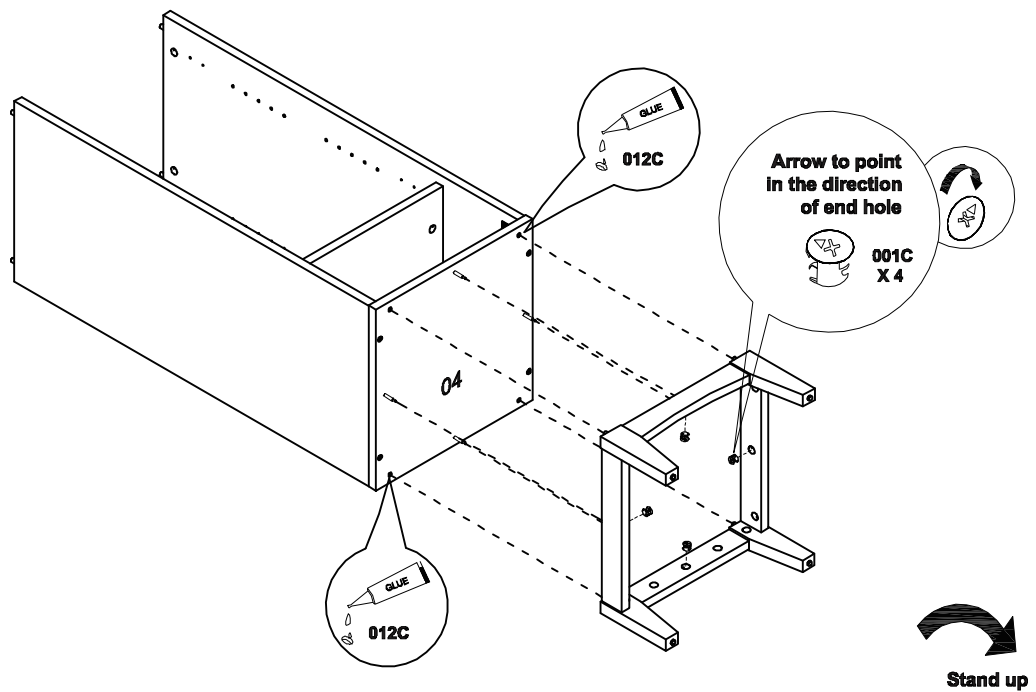
- 012C 
- 016C 
- 001C 
- 003C 
- X4
- X12
- X4







# STEP 8

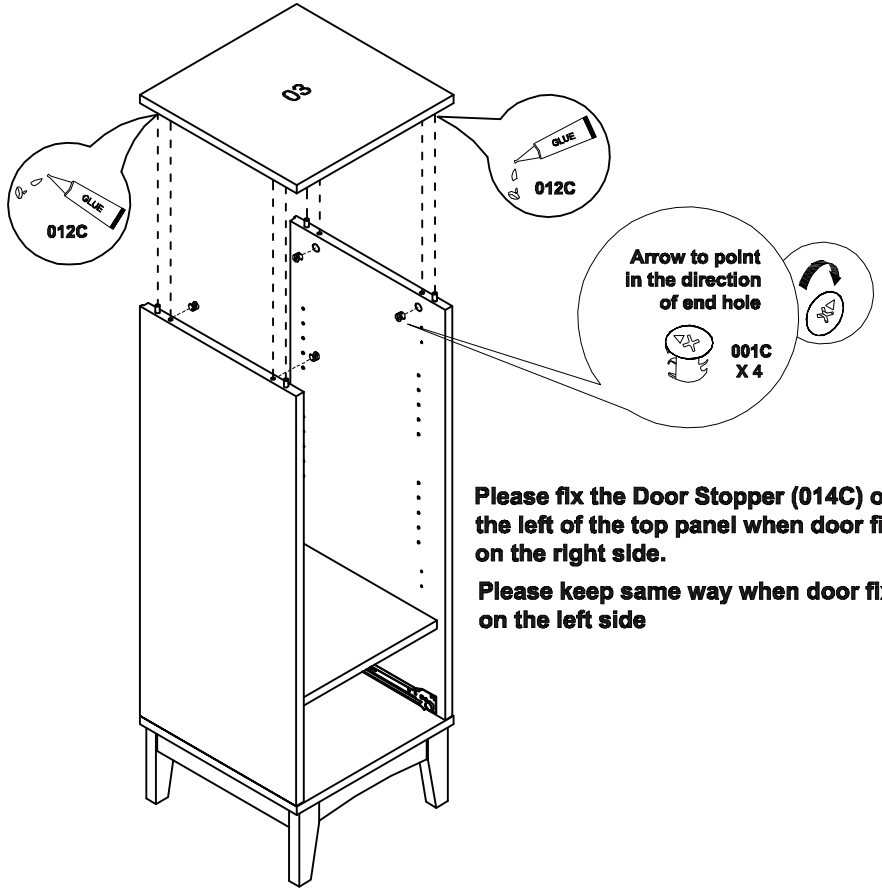
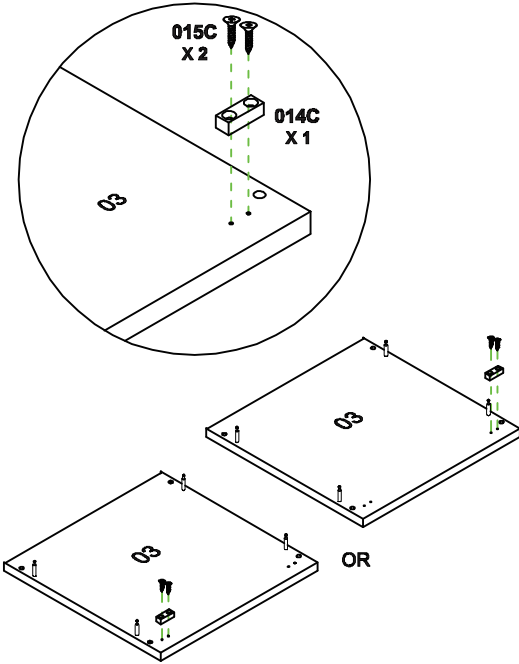
Will require these parts:

- 001C 
- 012C 
- X4






**STEP 9** Will require these parts:

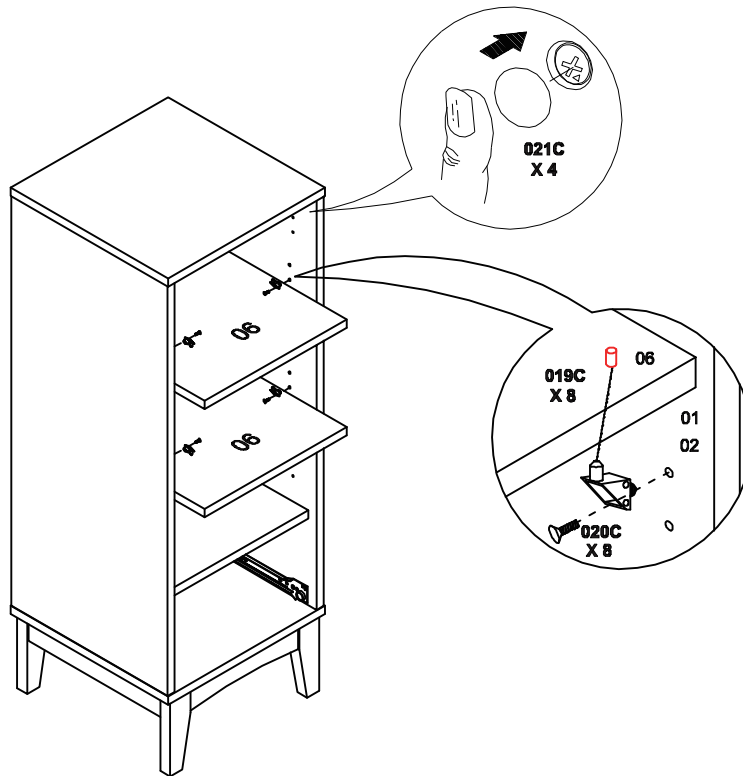
- |   |  |  |  |
|---|--|--|--|
|  |  |  |  |
| 012C  | 001C   | 014C   | 015C   |
| X 4   | X 4  | X 1  | X 2  |



Please fix the Door Stopper (014C) on the left of the top panel when door fix on the right side.  
Please keep same way when door fix on the left side





**STEP 10** Will require these parts:

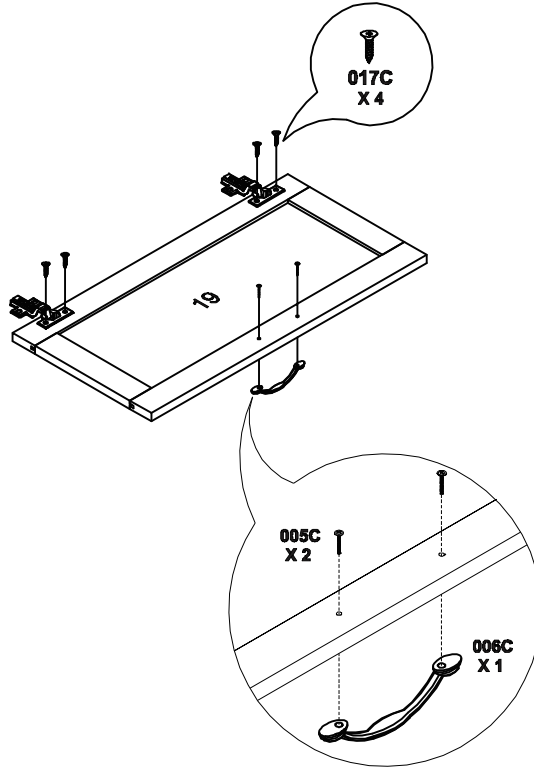
- |   |   |   |
|---|---|---|
|  |  |  |
| 021C  | 020C  | 019C  |
| X 4   | X 8   | X 8   |



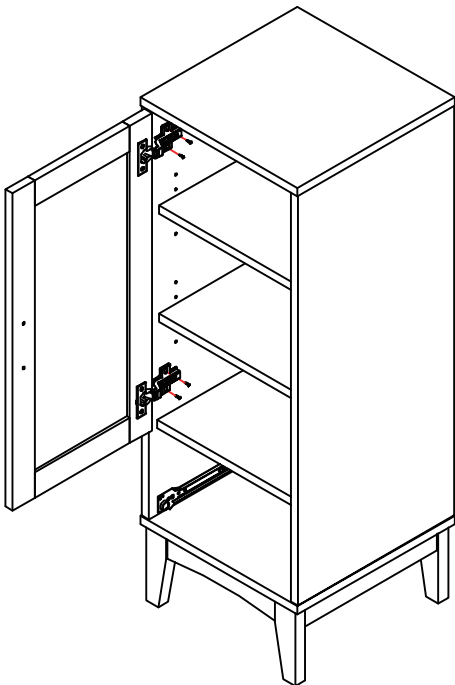


**STEP 11** Will require these parts:

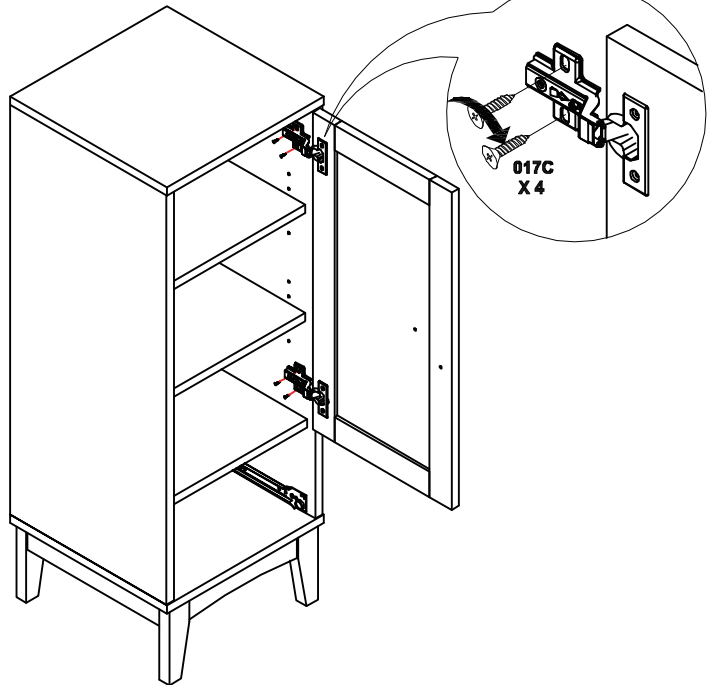
- |  |   |  |  |
|--|---|--|--|
|  |  |  |  |
| 017C   | 018C  | 005C   | 006C   |
| X 8  | X 2   | X 2  | X 1  |



**Please note that door can be fixed on the left or right as below**



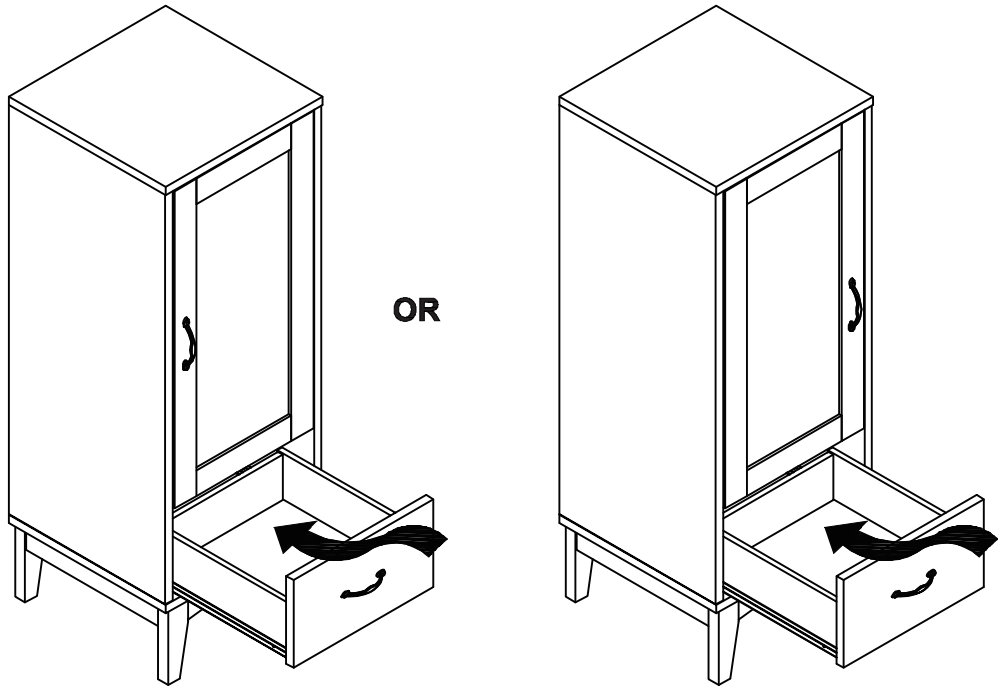
**Door on the left**



**Door on the right**

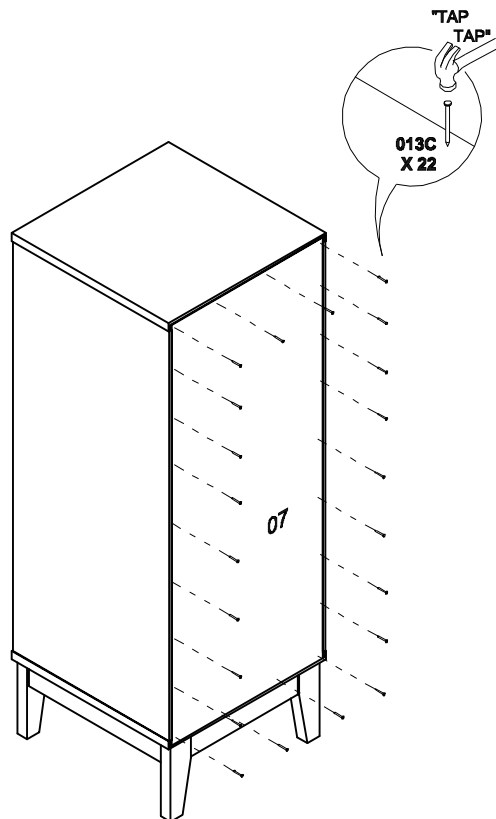
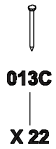
# STEP 12

Will require these parts:



# STEP 13

Will require these parts:



## The job is now complete!

In the interest of our environment  
please dispose of all packaging thoughtfully.